

▶ YOUR RELIABLE PARTNER



SITEX C3003

Portable X-Ray Generators



TELEDYNE ICM
Everywhereyoulook™

Part of the Teledyne Imaging Group

Quality, Performance, Ruggedness



**DIRECTIONAL,
PANORAMIC &
CRAWLER**



IP 65



50 TO 360 KV



RUGGEDIZED



**AUTO-CORRECTION
X-RAY BEAM**

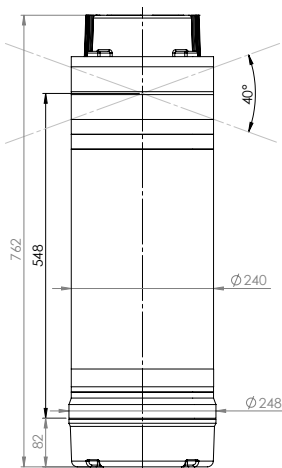
FEATURES

	Unit	SITEX C3003
Beam	-	Panoramic
Power supply	-	Battery
Output voltage range	kV	90 to 300
Tube current range	mA	1 to 5
Tube current at full output	mA	3.0
Maximum power at the anode	W	N.A.
Constant power mode	-	No
Working cycle at 30°C (*)	%	100
Steel penetration (**)	mm/in	54 / 2.1
Weight (excluding hand rings)	Kg/lbs	32 / 70.5
Overall dimensions	mm/in	Ø 248 x 762 / 9.76 x 30
Leakage dose at 1 m at full output	mSv/h	< 10
Optical focal spot according to EN 12543	mm/in	Ø 5 x 0.8 / 0.2 x 0.03
Maximum useful angle	°	360 x (2x20)
Inherent filtration	mm/in	2.5 (Al) + 0.4 (Ni) / 0.1 + 0.02
Waterproof level	-	IP65
Operating temperature	°C/F°	-25 to +70 / -13 to +158
Storage temperature	°C/F°	-40 to +80 / -40 to +176
Guard rings	-	/

(*) Open air - airstream 5m/sec.

(**) 700 mm FFD, 20 min., AA400, D=1.5 for SITEX

DRAWINGS



CCU

	Unit	CCU
Type of power supply	-	Pb or Cd-Ni batteries
Unique supply voltage range	VDC	105 to 140
Max. mean current (300kV/3mA - SITE-X C3003)	A	7
Direct kV and mA measurements - control	%	+0.5 / -0.5
Display of programmed parameters (CCU186R)	-	Yes
kV, mA programming step (CCU186R)	kV/mA	1/0.1
Useful range of the internal preheating timer	min	2 to 30 (1 min step)
Battery voltage control accuracy	%	± 0.2
LED display with variable brightness (CCU186R)	line x	1 x 8 with anti-reflection
Sensory type polyester alphanumeric keypad	char	12
General switch on function	keys	Provided by the crawler
"START", "STOP" and exposure time functions	-	Provided by the crawler
Semi-automatic preheating at selected kVs	-	Yes
Total weight	kg/lbs	4 / 8.8
Overall dimensions of CCU186 (W x H x D)	mm/in	280 x 170 x 162 / 11 x 6.7 x 6.4
Overall dimensions of CCU186R (W x H x D)	mm/in	100 x 211 x 26 / 3.9 x 8.7 x 1
Operating temperature range	°C/F°	-25 to +85 / -13 to 185
Storage temperature range	°C/F°	-40 to +85 / -40 to 176

ACCESSORIES



ALUCASE



FLASHING LIGHT



TRIPOD

All specifications are non contractual and subject to change without prior notice.

TELEDYNE ICM

Zoning Les Plenesses / Rue Du Progrès 3 / B-4821 Andrimont (Dison) - Belgium

+32 (0)87 44 01 50 / icm.sales@teledyne.com



TELEDYNE ICM
Everywhereyoulook™

Part of the Teledyne Imaging Group